



ROUSSEAU <http://lejardindeclairer.blogs.marieclaireremaison.com/archive/2014/10/16/dans-la-jungle-d-henri-rousseau-352347.html>

YEAR 3- TREES

PATTERN + TEXTURE

WHY ARE WE STUDYING THIS?

This project will help us to understand

- leaf shapes and patterns
- what “Pattern” is
- what “Texture” are

We will learn how to

- cut and fold paper to manipulate its shape
- create a textural backdrop
- work as a team

HOW CAN WE RECOGNIZE ROUSSEAU'S PAINTINGS?

What can you see?

Shapes?

Colours?

Patterns?

How does it feel?

It feels...

Explain what you like:

I like... because...



CREATE A DRAWING OF A ROUSSEAU JUNGLE...

Things to remember...

- Sketch details lightly.
- Draw things at front first, then draw layers behind.
- Overlap to make the jungle dense.
- Look carefully at details.



CREATE PAPER LEAVES

Things to remember...

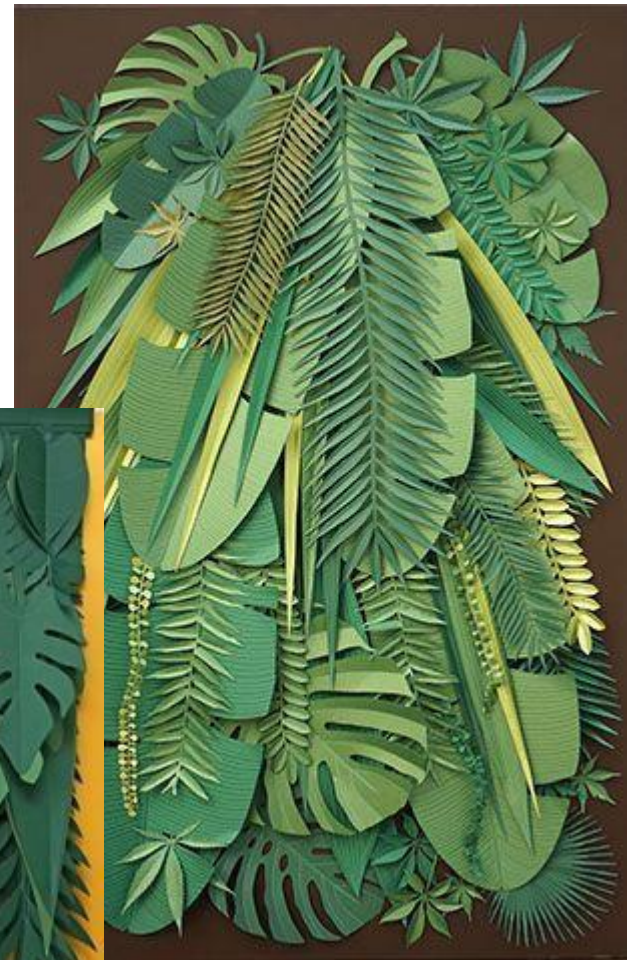
- Leaves are symmetrical
- Be careful when using scissors
- Create a range of sizes



CREATE A YEAR 3 JUNGLE BACKDROP

Things to remember...

- Work as a team- be kind, be patient, communicate, listen.
- Hang the leaves upside down from the stem.
- Start from the bottom with the longest leaves and work your way up the wall.





EVALUATION CHAT...

During this project I learned about...

I learned how to...

I enjoyed...

I am proud of...